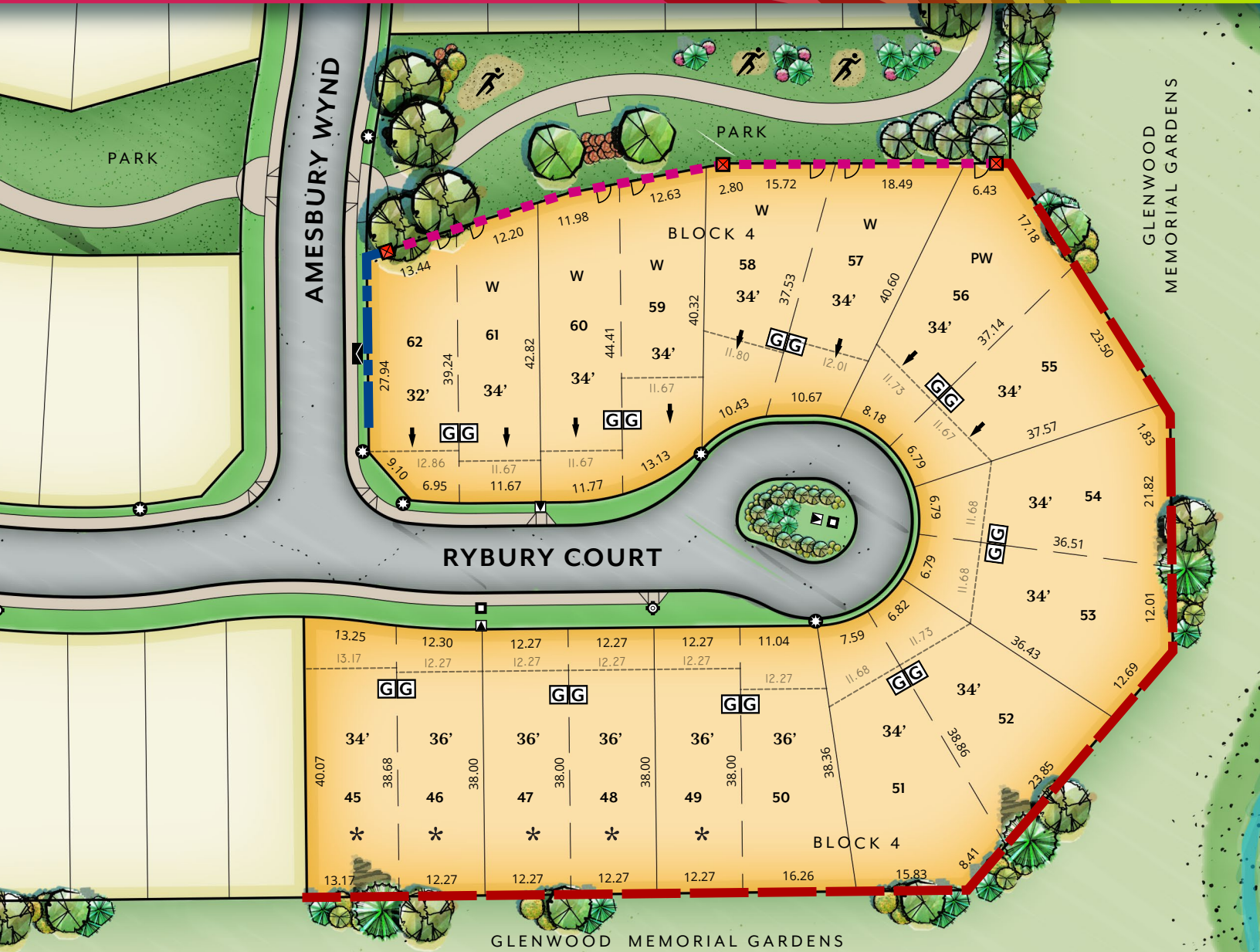


salisbury VILLAGE

stage 3C

Campbelltown Village Developments



LEGEND

- STREET LIGHT/POWER BASE
- SERVICE PEDESTAL
- PADMOUNT TRANSFORMER
- HYDRANT
- 34'** RECOMMENDED HOUSE SIZE (in ft) @ 12.0 m SETBACK
- GARAGE LOCATION
- SEMI-DETACHED/DUPLEX HOME
- DECORATIVE METAL FENCE ON PRIVATE PROPERTY
- STEP DOWN WOOD SCREEN FENCE ON PRIVATE PROPERTY
- WOOD SCREEN FENCE ON PRIVATE PROPERTY
- POST & RAIL FENCE
- MASONRY COLUMN
- GATE (APPROX. LOCATION)
- ROOF LEADERS MUST DRAIN TO FRONT OF LOT
- ENGINEERED FILL FOOTINGS MAY BE REQUIRED
- POTENTIAL TREE LOCATION
- OUTDOOR FITNESS ACTIVITY AREA

NOTE: This plan is **PRELIMINARY and subject to change**. Lot dimensions are approximate and have not been confirmed by a calculated survey plan. This plan is conceptual only. Please refer to the registered subdivision plan and approved engineering drawings to confirm information. Details are subject to change. Landscape shown conceptual only. For more information on land use, please contact Strathcona County.